

Collection: Bit Pixel



“ If only I could look up
and touch a sky made of tetrominoes...
Luckily, I have my pixel dreams...”

John Polson



One of the oldest artistic techniques is mosaic, one of the most modern expressions of visual language are digital images. This is the link between ancient and contemporary on which the design of the “Pixel” series is based. This paradigm is translated into ceramic through the design of a 10x10 cm relief tile divided into square cells that represent the linearity of the pixels through which it is possible to depict the complex textures inspired by ancient mosaics, taking up from them a constant, never ending, geometric pattern; a link between past and contemporary, in which echoes of the antique bonds with the new, in a game of continuity and disruption with the old. The palettes are all in glossy “Craquelé” enamels , available in many tints, that range from the “Blue Tastardi” , elegant and contemporary to the more vivid and warm ones.

Specifications



Available sizes

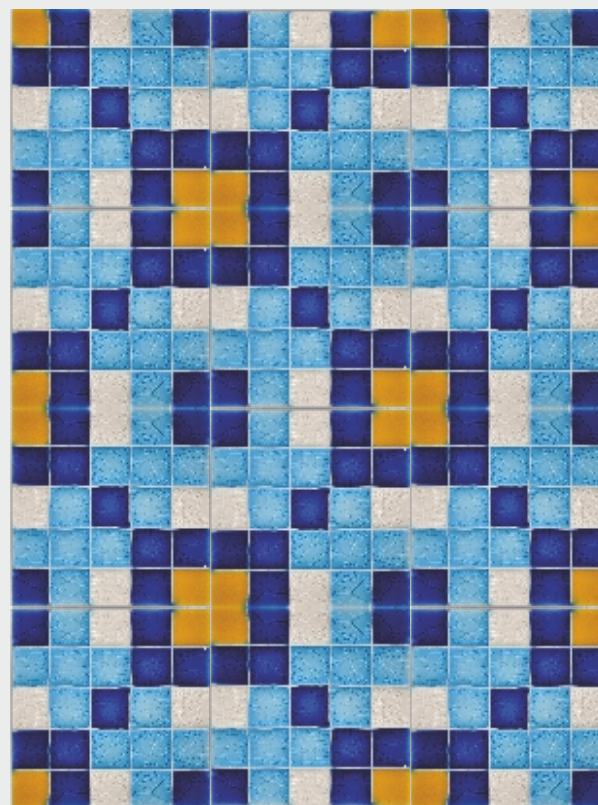
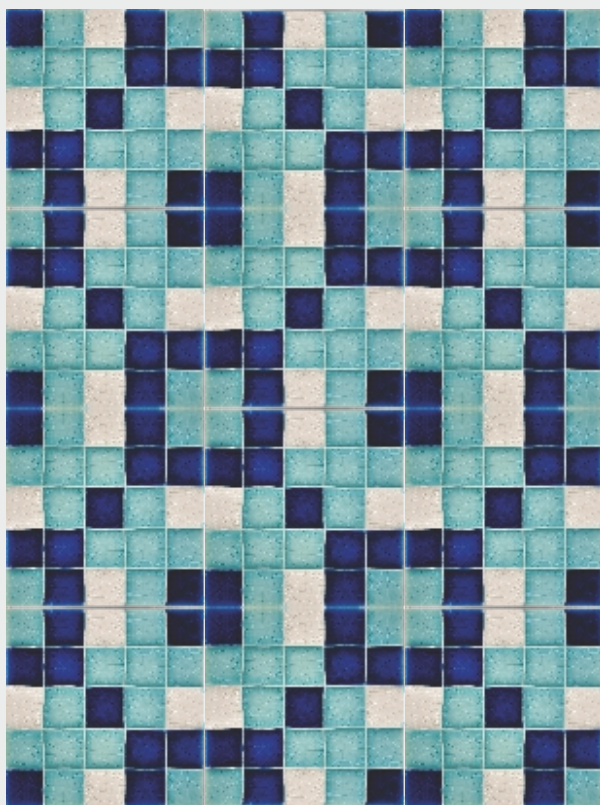
10x10cm (6"x6") sp. 8mm (0,35")



0177



0179



TECHNICAL DATA SHEET

"Relief Texture" white clay support

First firing at 1050°

Handmade decoration with coloured glossy crystallines in "Craquelé" Final glazing with glossy crystalline

Second firing (enamel) at 950°